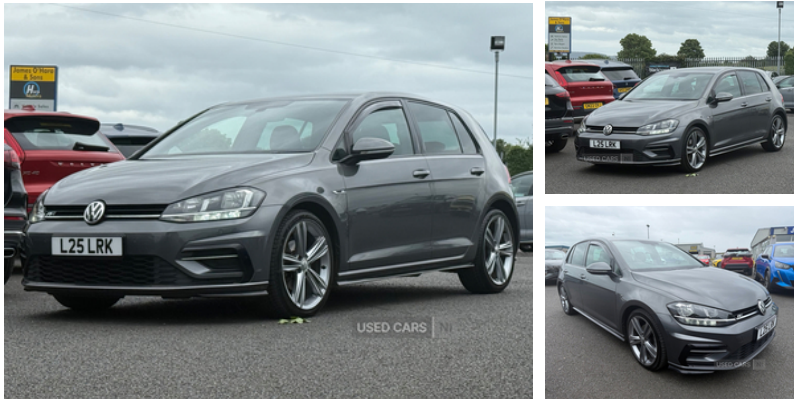


Volkswagen Golf 2.0 TDI R-Line 5dr | 2019

£13,490



Vehicle Features

'Lights On' warning buzzer, 3 rear headrests, 3 rear three point seatbelts, 4 load lashing points in luggage compartment, 12V socket in luggage compartment, 60/40 split folding rear seat backrest, ACC - Adaptive cruise control with front assist, Airbags - Driver's and front passenger's, Alarm with interior protection and deactivation via infotainment system, Ambient lighting pack - Golf, Anti-lock Braking System (ABS) with Hydraulic Brake Assist (HBA), Automatic post collision braking system, Bag hook in luggage compartment x 2, Battery regeneration during braking, Black front air intake and radiator grille with chrome insert, Black headlining, Black roof lining, Bluetooth telephone and audio connection for compatible devices, Body colour bumpers, Body colour door handles, Body colour door mirrors with integrated indicators, Body colour rear roof spoiler, Brake pad wear indicator warning light, Child locks on rear doors, Chrome-plated light switch surround, Chrome plated air vent surround, Chrome plated electric mirror adjustment switch surround, city emergency brake and speed limiter, Composition media system, Convenience Pack - Golf, Cooled glovebox, curtain airbag, DAB Digital radio receiver, Dark Diamond decorative inserts in dash and door panels, Diesel particulate filter, distance monitoring, door mirror puddle lights and reverse activated kerb-view adjustment on passengers door mirror, Driver's knee, Driver/Passenger optimised head restraints, Driver alert system, Driver Personalisation profile selection, Driving Mode Selection with four preset modes - Eco, Dusk sensor + automatic driving lights, Dust/pollen filter, Electrically adjustable and heated door mirrors, Electric front windows, Electric rear windows, Electronic engine immobiliser, electronic odometer, Electronic parking brake with auto hold, Electronic stability control (ESC) including Electronic differential lock (EDL) and ASR (Traction control) with deactivation via infotainment system, Embossed R line logo on front sport seat backrest, exterior temperature and fuel gauge, Front + rear carpet mats, Front centre armrest with storage compartment and two rear air

Miles:	80000
Fuel Type:	Diesel
Transmission:	Manual
Colour:	Grey
Engine Size:	1968
Tax Band:	Petrol/Diesel (£195 p/a)
Body Style:	Hatchback
Insurance group:	20E
Reg:	L25LRK

Technical Specs

DIMENSIONS	
Length:	4258mm
Width:	1799mm
Height:	1492mm
Seats:	5
Luggage Capacity (Seats Up):	380L
Gross Weight:	1850KG
Max. Loading Weight:	559KG
PERFORMANCE & ECONOMY	
Fuel Consum. (Urban Cold):	52.3MPG
Fuel Consum. (Extra Urban):	74.3MPG
Fuel Consum. (Combined):	64.2MPG
Fuel Tank Capacity:	50L
Number Of Gears:	6 SPEED
Top Speed:	134MPH
Acceleration 0-100 km/h:	8.6s
Engine Power BHP:	147.5BHP

vents, Front seat back storage pockets, front side impact and passenger's airbag deactivation switch, Front ventilated disc brakes and rear disc brakes, Fully galvanised body, Glossy black R-Line specific louver ventilation, Grab handles front x 2, Heated rear windscreen, height adjustable and removable, Height and reach adjustable steering wheel, High level 3rd brake light incorporating LED Technology, Illuminated vanity mirrors, Instrument cluster in white, Instrument lighting white adjustable panel illumination, Interior light delay, Isofix preparation for 2 rear child seats, Leather gear knob and handbrake grip, LED front fog lights with static cornering light function, Left and right chrome effect trapezoid dummy exhaust tailpipe surrounds, Light and Sight pack - Golf, Load through provision with rear centre armrest and cupholders x2, Luggage compartment lighting, Mirror pack - Golf, Misfuelling protection device, MP3/WMA compatibility, Multi device interface (MDI) with USB connection, Multifunction computer with visual gear change recommendation for fuel consumption, Multifunction sports leather steering wheel with R-Line logo and decorative seams in crystal grey, normal, Overhead storage box, Piano black decorative inserts in centre console, Power assisted speed sensitive electro-mechanical steering, Pre crash preventive occupant protection, Premium USB cable in choice of either Apple or Android smartphone compatibility, Push tank flap, Radiator grille with R-Line logo, Range adjustable headlights via infotainment system with LED daytime running lights, Rear diffuser, Rear fog lamp, Rear number plate lights incorporating LED technology, Rear tinted glass 65% light absorbing from B pillar backwards, Rear window aerial, Rear window wash/wipe with intermittent wipe, rear x 2 with integrated coat hooks, Reflectors in all doors, Remote electrically foldable door mirrors, rev counter, R Line Styling pack - Golf, service interval display, Shiny black aerofoil downside, Sill extensions, SMS Functionality, Speed limit display, Speedo, sport or individual modes, Stainless steel door sill protection, Stainless steel pedals, Startup screen with R-Line logo, Steel space saver spare wheel, Stop/start system, Storage box in luggage compartment, Storage compartment in roof console with cover, Storage compartments in front doors, Storage compartments in rear doors, Stowable luggage compartment cover, Sun visors, Think blue trainer driver tips and journey analysis, Three point height adjustable front seatbelts with tensioners, trip, Tyre pressure loss indicator, Unique R Line badging, USB and SD card connectivity, Variable boot floor, Warning buzzer and light for front seatbelts unfastened, Windscreen wipers/ intermittent wipe + 4 position delay, XDS electronic differential lock